

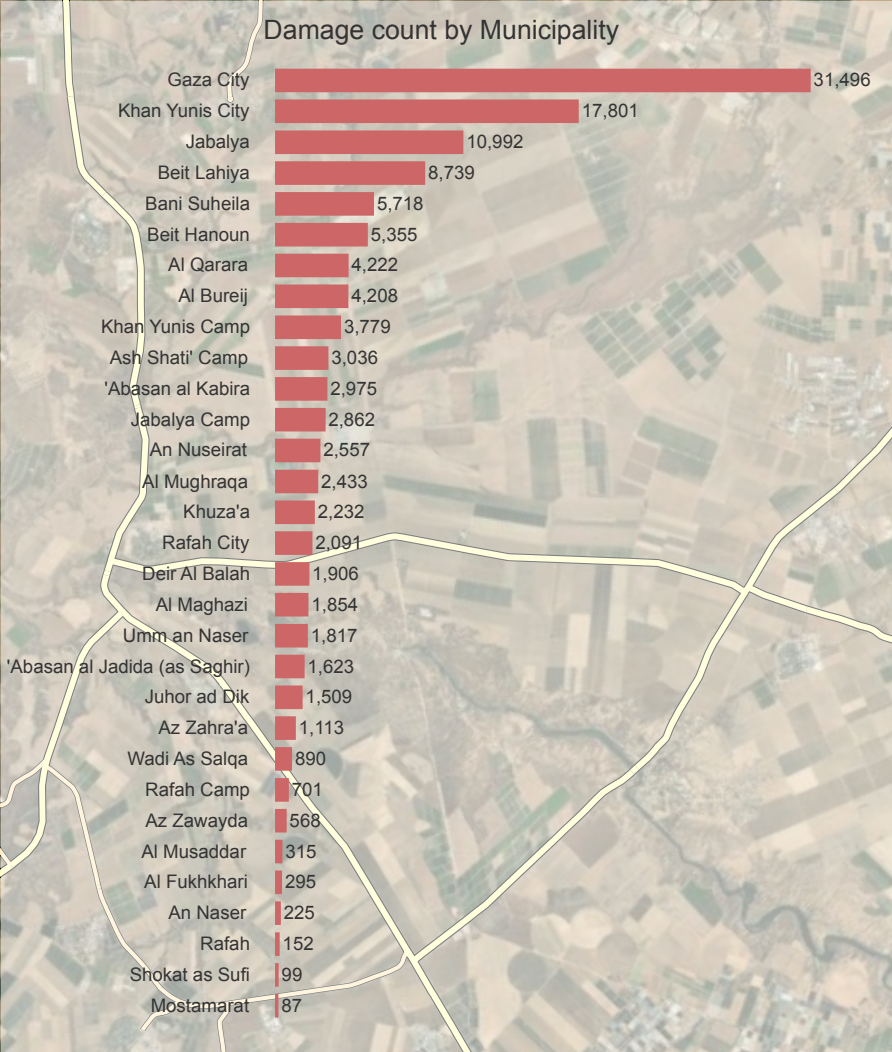
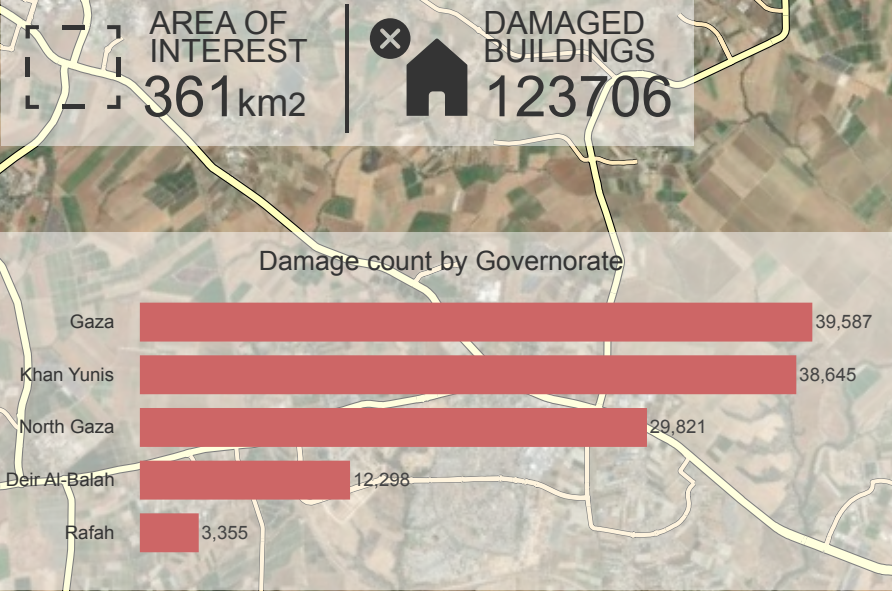
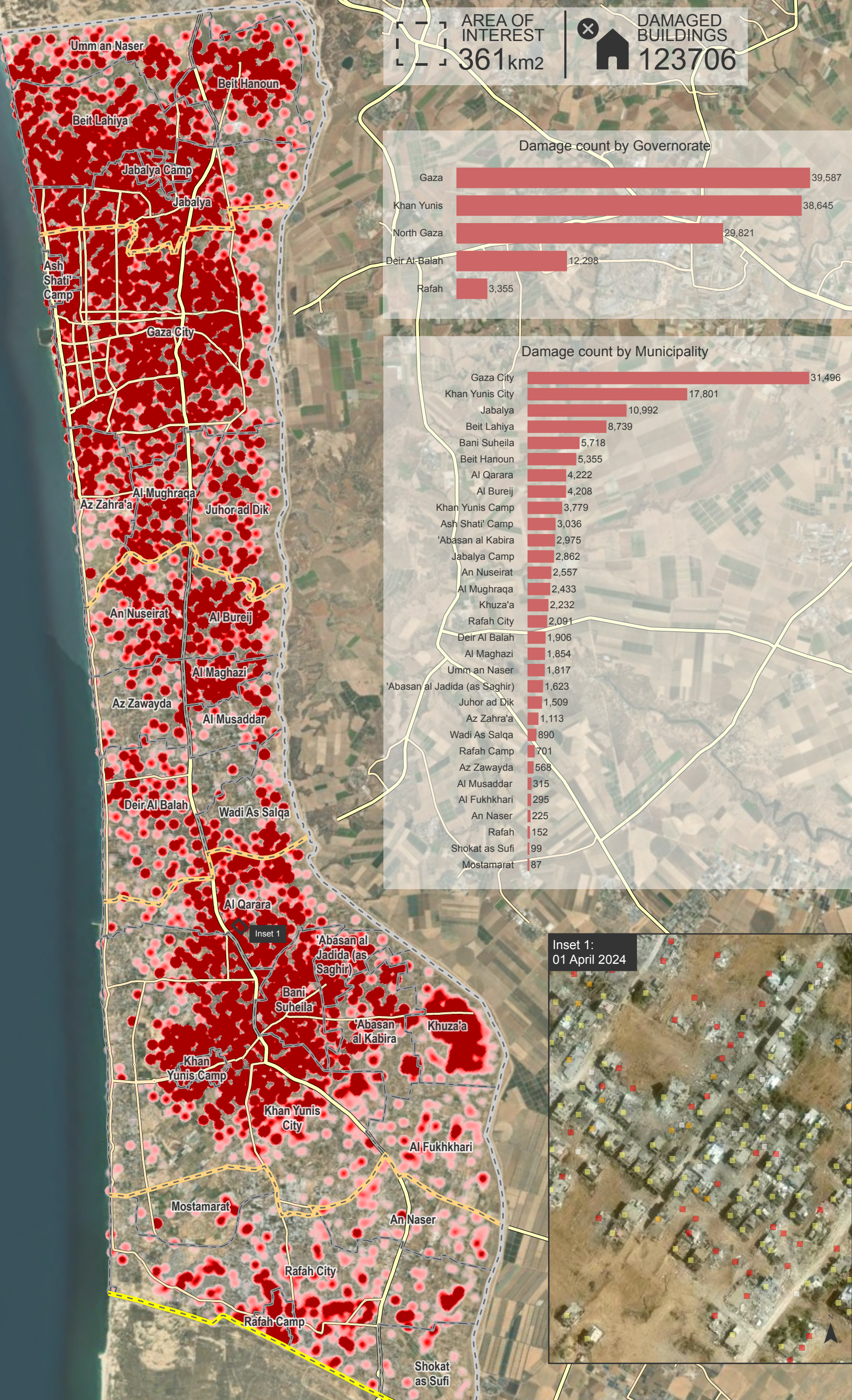
OCCUPIED PALESTINIAN TERRITORY

GAZA STRIP

IMAGERY ANALYSIS: 01 April 2024 / PUBLISHED: 19 April 2024 / V1



**COMPLEX
EMERGENCY**
CE20231007PSE



UNOSAT Damage Assessment Overview Map

This map illustrates a satellite imagery based comprehensive assessment of damage and destruction to structures within the area of interest in the Gaza Strip, Occupied Palestinian Territory, based on images collected on 31 March 2024 and 1 April 2024 when compared to images collected on 1 May 2023, 10 May 2023, 18 September 2023, 15 October 2023, 7 November 2023, 26 November 2023, 6-7 January 2024, and 29 February 2024. According to satellite imagery analysis, UNOSAT identified 34,115 destroyed structures, 17,055 severely damaged structures, 42,659 moderately damaged structures, and 29,877 possibly damaged structures for a total of 123,706 structures. These correspond to around 50% of the total structures in the Gaza Strip and a total of 128,904 estimated damaged housing units. The governorate of Khan Yunis has experienced the highest rise in damage compared to the 29 February 2024 analysis, with 3,068 new structures damaged, equivalent to a 9% increase. Within Khan Yunis, Khan Yunis City and Al Qarara municipalities had the highest number of newly damaged structures, totaling 1,430 and 1,353 respectively. This is a preliminary analysis and has not yet been validated in the field.

Legend

- Primary road
- Secondary road
- Armistice Demarcation Line
- International boundary
- Governorate boundary
- Municipality boundary
- Damage density
 - Sparse
 - Dense
- Damage assessment
 - Destroyed
 - Severely damaged
 - Moderately damaged
 - Possibly damaged

The boundaries and names shown and the designations used on this map do not imply official endorsement or acceptance by the United Nations.

Map scale for A3: 1:125,000
0 0.5 1 2 KM